

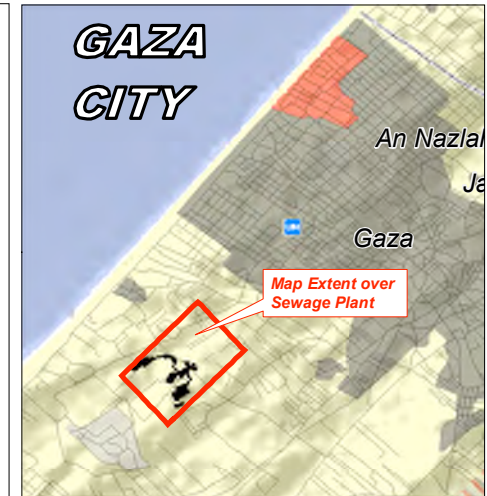
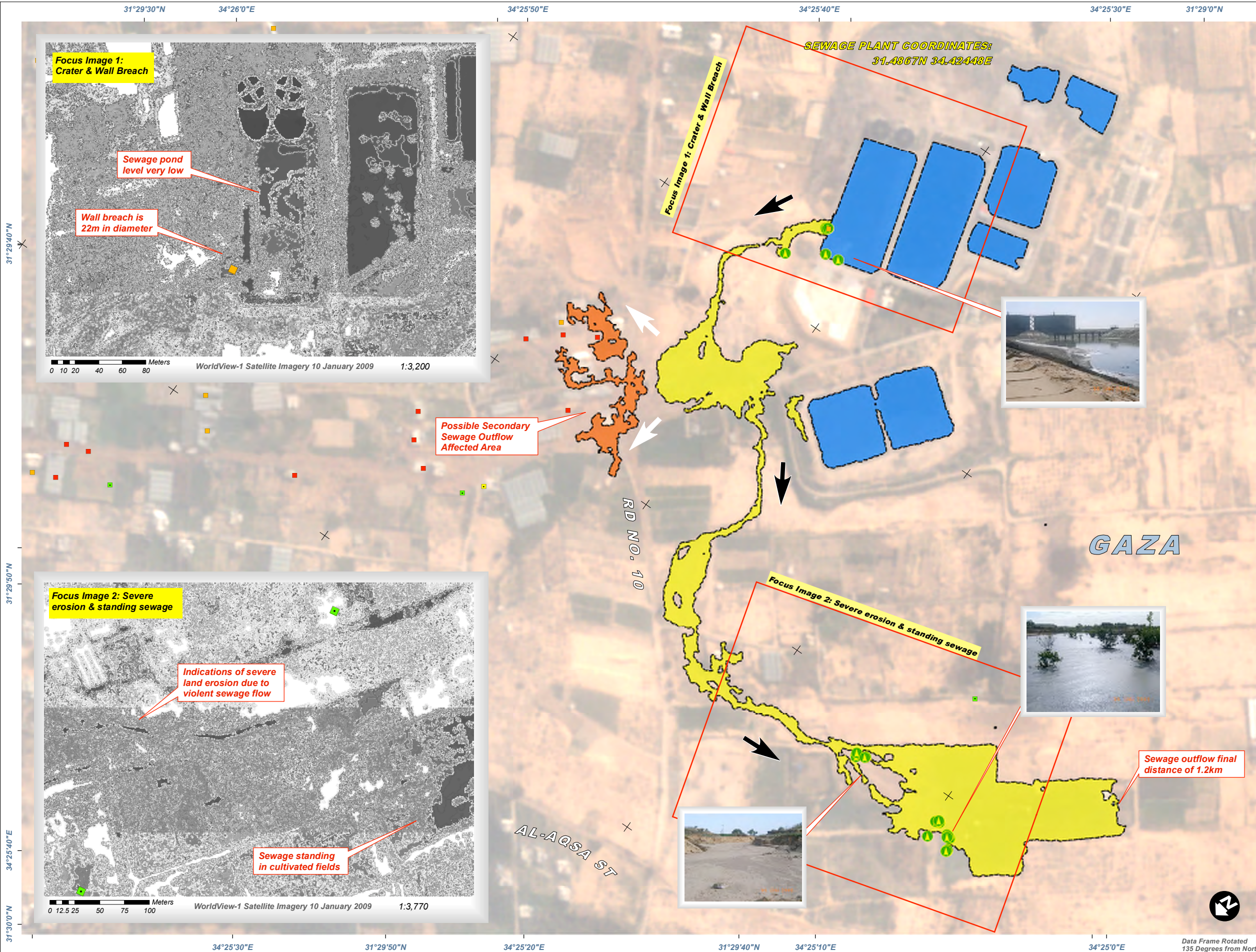
SEWAGE TREATMENT PLANT DAMAGE & OUTFLOW DETECTION, SHEIKH EJLIN

Damage Analysis with QuickBird Satellite Imagery Recorded 16 January 2009 - Ground Survey Photos by UNEP 30 January 2009

This map illustrates damages to the sewage treatment plant located along Road Number 10, in Sheikh Ejlin area. A single impact crater (occurring sometime before 10 January 2009) to the eastern section of a holding pond (70m x150m) caused a massive outflow of sewage, moving an estimated total distance of 1.2km. The estimated area affected by the outflow is approximately 5.5 ha. An area affected by a suspected secondary flow further west has also been marked as well as damage buildings and impact craters in the region. This analysis has been made with imagery at a reduced spatial resolution of 2 meters. Affected buildings were classified either as destroyed or severely damaged by standard image interpretation methods. Ground survey data and photos provided by UNEP from mission 30 January 2009.



Security Event 27 February 2009
Version 1.2
UNOSAT-2009-000020



Map Legend

BUILDING SITE DAMAGE ASSESSMENT

- Building: Likely Destroyed (Red square)
- Building: Likely Severely Damaged (Orange square)
- Impact Crater (Road) (Yellow square)
- Impact Crater (Field) (Green square)

PLANT DAMAGE ASSESSMENT

- UNEP Ground Survey Site 30 January 2009 (Green circle with crosshair)
- Main Sewage Outflow Direction (Thick black arrow)
- Possible Secondary Sewage Direction (Thin grey arrow)
- Sewage Outflow Affected Area (Yellow shaded area)
- Contained, Normal Sewage Level (Blue shaded area)
- Possible Secondary Sewage Outflow Affected Area (Orange shaded area)

Map Scale for A3: 1:4,750

0 25 50 100 150 200 Meters

Survey Photos UNEP 30 Jan09
Satellite Image (1) QuickBird-02
Resolution 2m (Reduced Resolution)
Imagery Dates 16 January 2009
Copyright Digital Globe (2008)
Satellite Image (2) WorldView-1
Resolution 2m (Reduced Resolution)
Imagery Copyright Digital Globe (2008)
Imagery Date 6 & 10 January 2009
Damage Analysis UNOSAT
GIS Data UNRWA, OCHA, UNOSAT
Projection UTM Zone 36 North - WGS84

The depiction and use of boundaries, geographic names and related data shown here are not warranted to be error-free nor do they imply official endorsement or acceptance by the United Nations. This map was produced by the United Nations Institute for Training and Research (UNITAR) Operational Satellite Applications Program (UNOSAT). UNOSAT provides satellite imagery & related geographic information to UN humanitarian & development agencies & their implementing partners.

unitar
United Nations Institute for Training and Research

UNOSAT
satellite solutions for all

Contact Information: info@unosat.org
24/7 Hotline: +41 76 487 4998
www.unosat.org